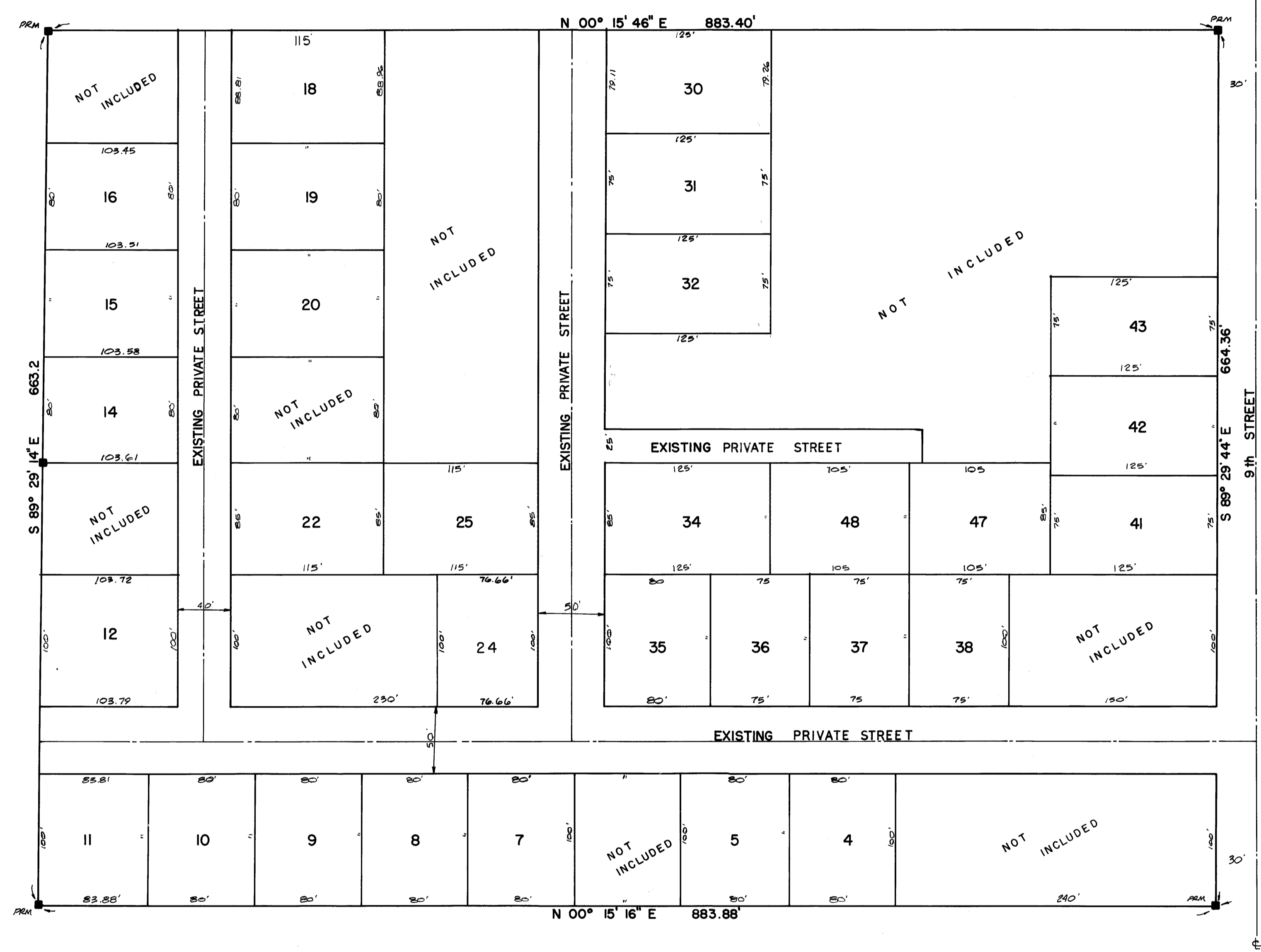
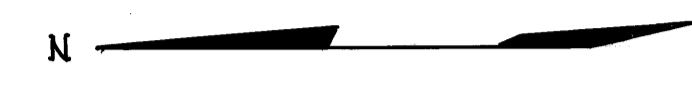
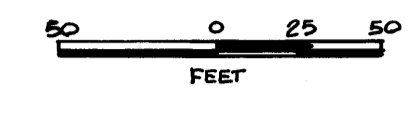


MINOR PLAT PALM LAKE ESTATES

STARTING AT THE S.W. CORNER OF THE S.E. ONE-QUARTER OF SECTION 18, T 38 S, R 41 E, MARTIN COUNTY, FLORIDA; THENCE RUN N 00° 15' 16" E A DISTANCE OF 1100.4' TO THE POINT OF BEGINNING, CONTINUE TO RUN N 00° 15' 16" E A DISTANCE OF 883.88', THENCE RUN S 89° 29' 14" E A DISTANCE OF 663.2', THENCE RUN S 00° 15' 46" W A DISTANCE OF 883.4', THENCE RUN N 89° 29' 44" W A DISTANCE OF 664.36 TO THE POINT OF BEGINNING.

FEBRUARY 13, 1973

SCALE 1" = 60'



FILED FOR RECORD
MARTIN COUNTY, FLA.
1973 MAR -5 PM 2:41
LOUISE V. ISAACS
CLERK OF CIRCUIT COURT

I HEREBY CERTIFY THAT I HAVE EXAMINED THE ATTACHED PLAT, AND FIND THAT IT COMPLIES IN FORM WITH MARTIN ORDINANCE NO. 14 OF MARTIN COUNTY, AND WAS FILED FOR RECORD IN PLAT BK. 5 PAGE 54, THIS 5 DAY OF MARCH A.D. 1973, IN THE OFFICE OF THE CIRCUIT COURT IN STUART, MARTIN COUNTY, FLORIDA.
LOUISE V. ISAACS
CLERK OF CIRCUIT COURT
FILE NO. 188245
By: [Signature]

CERTIFICATE OF OWNERSHIP

STATE OF FLORIDA
COUNTY OF MARTIN

WE, GENE J. ZORATTI AND ESTELLE G. ZORATTI, HIS WIFE, DO HEREBY CERTIFY THAT WE ARE THE OWNERS OF THE LAND SHOWN HEREON.

Gene J. Zoratti
GENE J. ZORATTI
Estelle G. Zoratti
ESTELLE G. ZORATTI

STATEMENT

BE IT KNOWN THAT THE BOARD OF COUNTY COMMISSIONERS OF MARTIN COUNTY SHALL HAVE NO RESPONSIBILITY, DUTY, OR LIABILITY WITH REGARD TO ANY PRIVATE STREET SHOWN HEREON.

Gene J. Zoratti
GENE J. ZORATTI
Estelle G. Zoratti
ESTELLE G. ZORATTI

CERTIFICATION

STATE OF FLORIDA
COUNTY OF MARTIN

I, RANDELL E. FISHER, DO HEREBY CERTIFY THAT THIS PLAT OF PALM LAKE ESTATES IS A TRUE AND CORRECT REPRESENTATION OF THE LANDS SURVEYED, THAT THE SURVEY WAS MADE UNDER MY SUPERVISION, AND THAT THE SURVEY DATA COMPLIES WITH ALL OF THE REQUIREMENTS OF CHAPTER 177, FLORIDA STATUTES.

Randell E. Fisher
RANDELL E. FISHER
FLORIDA SURVEYOR CERT. 1946

APPROVAL

STATE OF FLORIDA
COUNTY OF MARTIN

THIS PLAT IS HEREBY APPROVED BY THE UNDERSIGNED ON THE DATE OR DATES INDICATED.

Feb. 28, '73 Tom Cameron
DATE COUNTY ENGINEER
Feb. 28, 1973 [Signature]
DATE PLANNING DIRECTOR
Feb. 28, 1973 Stephen B. Calvert
DATE COUNTY ATTORNEY

RANDELL E. FISHER
SURVEYOR
STUART FLORIDA